



CLS USER'S GUIDE



101 Perimeter Road
Saskatoon, SK S7N 0X4
(306) 657-3500
Fax: (306) 657-3535

Welcome to the CLS!

Table of Contents

Facility Contact Information.....	PG 4-6
Safety Information.....	PG 7
Facility Maps.....	PG 8-9
Facility Services	
Parking Information.....	PG 10
Beamline Information.....	PG 11
Twitter.....	PG 11
User Feed Back.....	PG 11
End of Run Information.....	PG 11
Washrooms.....	PG 11
Telephone Services.....	PG 12
Lounge and Lunchroom.....	PG 12
Wireless Internet Access / Computers.....	PG 12
Printers/Copiers and Fax Machines.....	PG 12
Food.....	PG 13
Vending Machines.....	PG 13
Hot Beverages.....	PG 14

Welcome to the CLS!

Table of Contents

Saskatoon Amenities

Airport.....	PG 15
Taxi Services.....	PG 15
Car Rental Services.....	PG 15
Off Campus Restaurants/Food Options.....	PG 16
On Campus Restaurants/Food Options and Services.....	PG 18
Bus Services.....	PG 21
Banking Facilities.....	PG 23
Maps.....	PG 24

Facility Contact Information

Floor Coordinator.....	3639
Fire/Ambulance.....	9-911
Campus Safety.....	9-966-5555
Health Safety and Environment.....	3663
Health Safety and Environment (on call).....	9-227-3113
User Services Office - Room 2038.....	3700
Lobby - Guest Phone.....	3701
West Entrance (North Road).....	3702
Lunch Room.....	3713
Lounge.....	3755
Leon Katz Room 2027.....	3680

*Note: The prefix 9 is required when dialing an external number from a CLS phone

When dialing a CLS number from an external phone, dial 657-####.

BMIT- BioMedical Imaging and Therapy Facility		
BMIT-BM (05B1-1) and BMIT-ID (05ID-2)		
Staff Scientist	Tomasz Wysokinski	3710
Staff Scientist	George Belev	3814
Room 1128	BMIT	3630 (wireless)
Room 1129	BMIT POE-2	3629
Room 1605.4	BMIT SOE-1	3628
CMCF 1 - Canadian Macromolecular Crystallography Facility		
(08ID-1)		
Staff Scientist	Pawel Grochulski	3538
Science Associate	James Gorin	3776
Research Associate	Shaun Labiuk	3828
Room 1608	CMCF 1	3610 (wireless)

Facility Contact Information

CMCF 2 - Canadian Macromolecular Crystallography Facility (08B1-1)

Staff Scientist	Michel Fodje	3758
Science Associate	Kathryn Janzen	3836
Research Associate	Shaun Labiuk	3828
Room 1608.5	CMCF 2	3619

Far-IR (02B1-1)

Staff Scientist	Brant Billinghamurst	3554
Room 1601.2	Far-IR	3606

HXMA - Hard X-ray Micro Analysis (06ID-1)

Staff Scientist	Ning Chen	3571
Staff Scientist	Chang-Yong Kim	3765
Science Associate	Weifeng Chen	3829
Room 1606	HXMA	3611

Mid-IR (01B1-1)

Staff Scientist	Ferenc Borondics	3763
Staff Scientist	Tim May	3552
Science Associate	Tor Pedersen	3783
Room 1611.2	Mid-IR	3607
Room 1611.2	Mid-IR	3615 (wireless)

REIXS -Resonant Elastic and Inelastic Soft X-Ray Scattering (10ID-2)

Staff Scientist	Feizhou He	3726
Science Associate	David Muir	3766
Room 1610.4	REIXS	3621
Room 1610.4	REIXS	3618 (wireless)

SGM -Spherical Grating Monochromator (11ID-1)

Staff Scientist	Tom Regier	3733
Science Associate	David Chevrier	3778
Room 1611.4	SGM	3612

Facility Contact Information

SM-Soft X-Ray Spectromicroscopy (10ID-1)

Staff Scientist	Chithra Karunakaran	3749
Science Associate	Yingshen Lu	3743
Research Associate	Jian Wang	3546
Research Associate - PEEM	Uday Lanke	3769
Research Associate - STXM	Jay Dynes	3840
Room 1610.2	SM Lab	3609

SXRMB - Soft X-Ray Micro-Characterization (06B1-1)

Staff Scientist	Yongfeng Hu	3722
Science Associate	Lachlan MacLean	3834
Room 1606.1	SXRMB	3616
Room 1606.6	SXRMB	3614 (wireless)

SYLMAND - Synchrotron Laboratory for Micro and Nano Devices (05B2-1)

Staff Scientist	Venkat Subramanian	3579
Science Associate	Garth Wells	3736
Room 1104.3	SYLMAND Resist Lab	3623
Room 1104.4	SYLMAND Metrology Lab	3624
Room 1104	SYLMAND	3617 (wireless)

VESPERS - Very Sensitive Elemental and Structural Probe Employing Radiation from a Synchrotron (07B2-1)

Staff Scientist	Renfei Feng	3581
Science Associate	Darren Hunter	3786
Room 1607	VESPERS	3620
Room 1607	VESPERS	3613 (wireless)

VLS-PGM - Variable Line Spacing Plane Grating Monochromator (11ID-2)

Staff Scientist	Lucia Zuin	3724
Science Associate	Christopher Ryan	3640
Research Associate	Mike MacDonald	3812

Safety Information

In the case of an emergency, contact the Floor Coordinator at 3639, and/or call 9-911 for fire/ambulance.

Please refer to the training provided in your health and safety orientation and the beamline specific orientation.

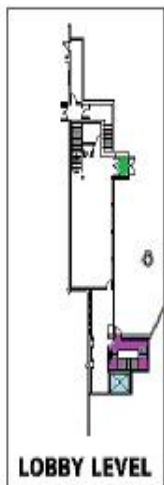


SafeWalk:

If going out at night alone, SafeWalk is a service provided through the University of Saskatchewan Students' Union, by volunteers and in partnership with Campus Safety. You can receive a Safewalk at ANYTIME. The SafeWalk Volunteers operate Monday through Thursday, 7:00 p.m. to 11:30 p.m. However, you can receive a SafeWalk at anytime by calling 966-SAFE (966-7233)*; when the volunteers are not on, the service is taken over by Campus safety.

*Note: During the summer months, please call Campus Safety at 966-5555 for SafeWalk.

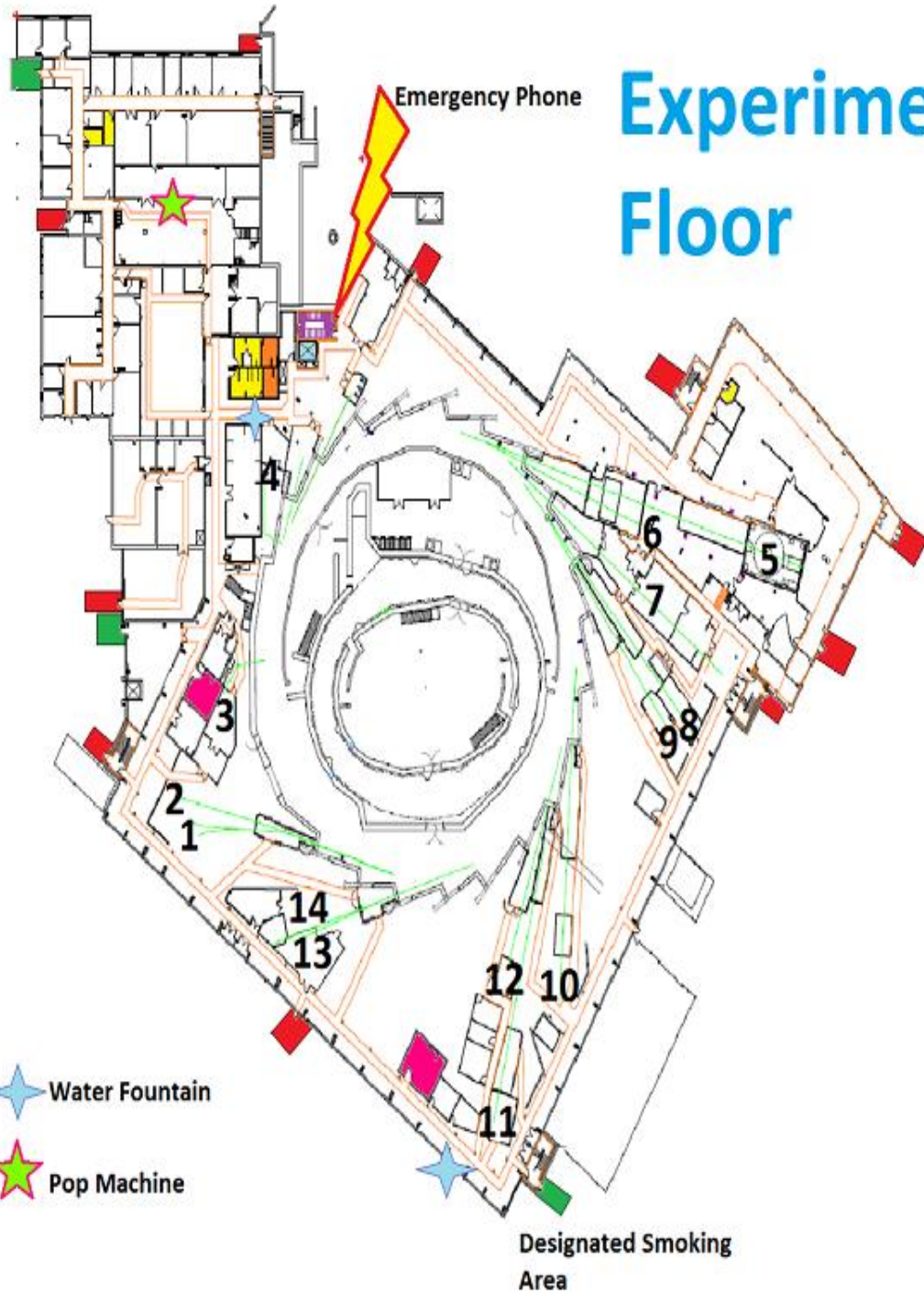
Facility Map - Experimental Floor



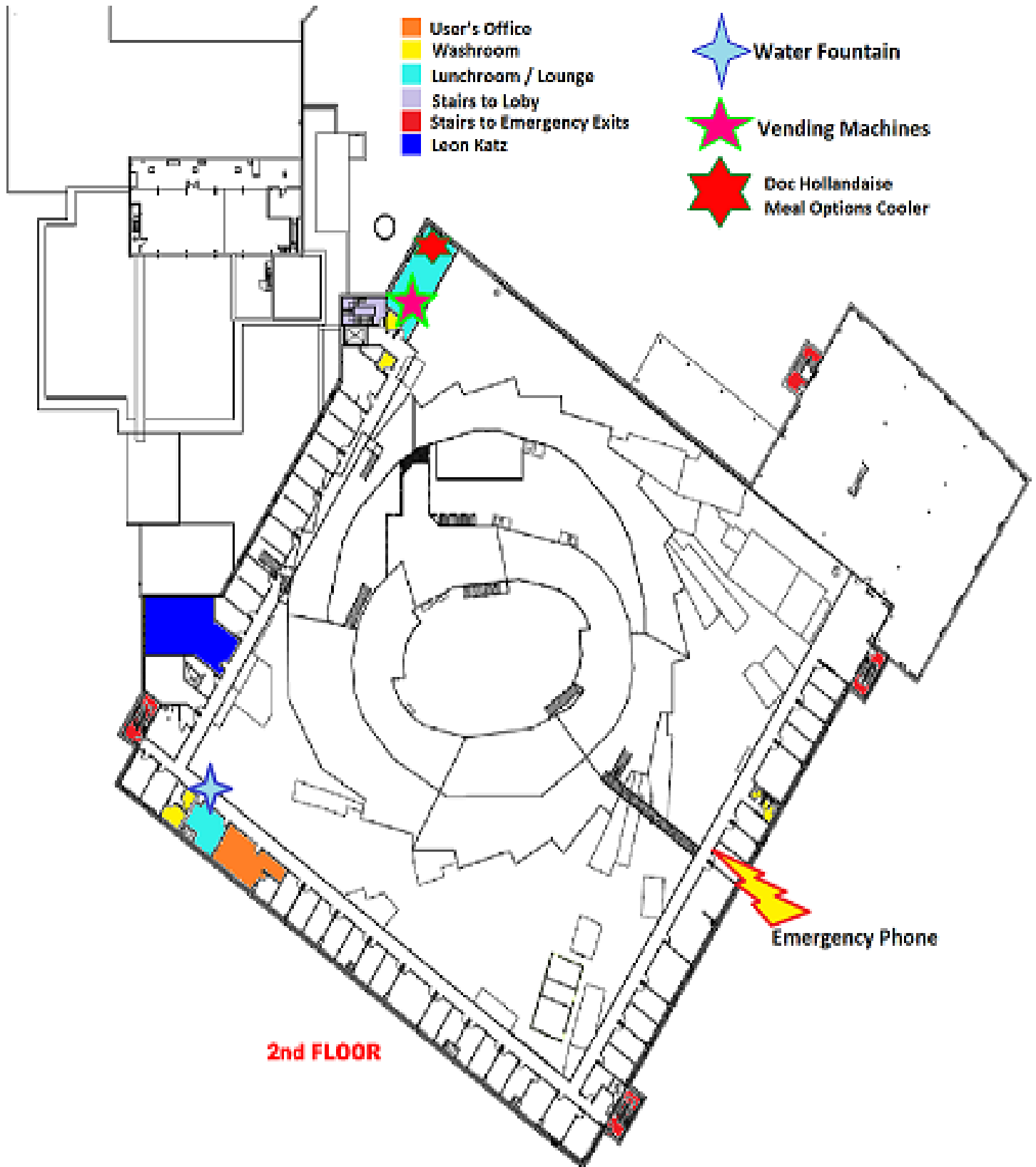
1. PGM
2. SGM
3. Mid IR
4. Far IR
5. BMIT
6. BMIT
7. SyLMAND
8. HXMA
9. SXRMB
10. VESPERS
11. CMCF 1
12. CMCF 2
13. REIXS
14. SM

- Entrance / Exit
- Emergency Exit
- Washroom
- Shower
- Wet Labs
- Stairs to Lobby
- Elevator

- ★ Water Fountain
- ★ Pop Machine



Facility Map - 2nd Floor Mezzanine



Parking

Users: May obtain one CLS parking lot permit, per experimental group per scheduled experimental time from reception.

CLS Guests: CLS Guests may use the metered parking in the CLS lot. Guests who are at the facility for more than 2 hours may purchase a parking pass for the CLS lot from reception at a rate of \$6.00/day and use it to park at a metered stall.

Visitors: Metered Parking in CLS Lot

On **weekdays** from 07:30 to 18:00, meters will have various time limits depending on their location and the fees will be:

- \$.25 = 7.5 minutes
- \$1 = 30 minutes
- \$2 = 60 minutes

From 18:00 to 22:00 **weeknights** and 07:30 to 22:00 on Saturday, meters will have a four-hour limit and the fees will be:

- \$.25 = 15 minutes
- \$1 = 60 minutes
- \$2 = 120 minutes
-

LOT 4: (Located off North Road)

- Approximately 199 spaces (non-electrified).
- Pay on exit, fully automated, unstaffed lot.
- In operation 24 hours per day, 7 days per week.
- \$1.00 per half hour (or portion thereof).
- \$6.00 (per exit) daily maximum.
- Accepts "prepaid cards" and cash denominations of \$20.00 or less.
- 18:00-06:00- \$3.00 per exit maximum.
- Sat, Sun, & Holidays - \$3.00 (per exit) daily maximum.
- **MUST EXIT DAILY.**
- May 1-August 31 (annually) - \$3.00 (per exit) daily maximum



Facility Services

Beamline Information: Beamline storage ring status is available on monitors throughout the facility, and at the following webpage:

http://www.lightsource.ca/operations/machine_status.php

In order to view the latest machine status, the webpage may need to be refreshed. Refer to the monitors for scheduled injection times. If you require a delay in injection, please contact the floor coordinator at 3639 at least 10 minutes prior to the next injection. The maximum delay allowed is 10 minutes.

twitter



Twitter: Follow the CLS on Twitter!! <http://twitter.com/CLSFC> Status updates and general facility information to be included. For updates on your cell phone text “follow CLSFC” to 21212. To discontinue, text “off CLSFC” to the same number.

User Feed Back: If you are having technical difficulties, want to make a suggestion or comment, please forward to technicalissues@lightsource.ca or contact Floor Coordinator at 3639.

End of Run Information: Please complete the Experiment Report (last page of your permit) when your beam time is finished. Also, please complete and return the End of Run Survey when you receive it. All invoices are to be paid at Reception.



Washrooms: Washrooms are in various locations throughout the facility. They are located on maps provided in this guide. Showers are located in the North West washrooms on the experimental floor. Please contact Floor Coordinator at 3639 if towels and/or shower amenities are required.

Facility Services



Telephone Services: Telephones are located throughout the facility and at each beamline. Please dial 9 when calling an external number from a CLS phone. In the event of a power outage, the phone system will not work. There are white phones located near the elevator on the experimental facility floor, and on the north east side of the mezzanine that will work during a power outage. Please refer to user map.



Lounge and Lunch Room: There is a lounge located in room 2037. The lounge provides a great space to rest and relax, including use of a couch, recliner chairs and blankets. The lunch room is located in room 2013, and has a choice of food options; please see food section for further details. Both the lunch room and lounge provide use of fridge, microwaves and toasters at no charge.



Wireless Internet Access: There is guest wireless access in the Facility. The directions to access are as follows:

Network: lumens

User Name: **clsi**

Password: month/year - e.g. **aug10**

A computer is available for use in the **Leon Katz Room 2027** -workstation #2. Additional computers are available in the User Services Office in room 2038, Monday to Friday between 08:00 and 16:30 for short term usage such as checking email, based on availability. For further information, please contact User Services Office.



Printer, Copiers and Fax Machine: Printers are located in the Leon Katz Room and User Services Office. Copiers/Fax machines are located in the lobby and south east corner of the Mezzanine.

Facility Services



Fresh Food: Doc Hollandaise @ CLS!!



Lunch Room - Monday to Friday morning break through lunch

Fresh Menu Items Include

Hot Entrees Sandwiches Baking Soup Salads Milk

-Sandwiches and meals can be pre-ordered when paid in advance-

-If you have any dietary requirements, let us know-

Payment Methods: Cash, Credit Card or User Charge Account

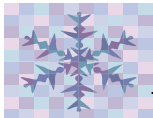
Receipts provided upon request.

If you would like to purchase food outside posted time above, contact the Floor Coordinator at 3639



Vending Machines:

Beverage and snack machines are located in lunch room.



Weather Gear: We now have winter jackets and umbrellas available for use while visiting the CLS. Contact the Floor Coordinator for further details.

Facility Services



Hot Beverages:

INTRODUCING
LATTE LOUNGE
YOURS TO ENJOY... 60 DIFFERENT WAYS

The new coffee system that offers a wide variety of specialty beverages – always freshly ground and freshly brewed for the freshest taste available.



FRESHLY GROUND, FRESHLY BREWED GOURMET COFFEES

Ground and brewed on the spot, one cup at a time, there is no fresher cup of gourmet coffee available.

SPECIALTY BEVERAGES

The choice is impressive:

- **Cappuccino:** An espresso-style coffee combined with hot, frothed milk
- **Caffè Latte:** Hot, frothed milk topped with an espresso-style coffee – slightly stronger than a Cappuccino
- **Mochaccino:** A delicious combination of espresso-style coffee, hot, frothed milk and creamy hot chocolate
- **Steamer:** Hot, frothed milk, regular or flavored with your choice of 3 flavors
- **Hot Cocoa:** Rich and creamy hot cocoa
- **Hot Chocolate with Milk:** Rich and creamy hot cocoa topped with hot, frothed milk
- **Café Mocha:** Freshly brewed dark roast coffee combined with rich and creamy hot cocoa

MAKE IT YOUR OWN

As a truly personalizing feature, the Latte Lounge system allows you to add a touch of flavor to all of the above-mentioned beverages.

Your choice: **French Vanilla, Irish Cream** or **Hazelnut Vanilla**

Brought to you by:



Find out how you
can turn your coffee
environment into a
LATTE LOUNGE



The Latte Lounge is located in the lounge. Prices are as posted. Coffee urns are also located in the lounge and lunchroom, the price is \$0.50 a cup and \$0.25 for tea. Please place money in designated payment container.

Saskatoon Amenities

Current weather conditions -

<http://www.theweathernetwork.com/weather/cask0276?ref=homecity>

Current Road Conditions -

<http://www.theweathernetwork.com/index.php?product=hwycond&pagecontent=sk>



Airport: John G. Diefenbaker International Airport - www.yxe.ca

Taxi Services: Please ask dispatcher to send taxi to the north road entrance, just north of the Peterson building.

Blue Line Taxi.....	653-3333
Saskatoon Radio Cabs Ltd.....	242-1221
SLT Executive Car Service.....	665-0000
United Cabs Ltd.....	652-2222



Car Rental Services:

Avis Car & Truck Rental 114-2301 Ave C N.....	652-3434
Budget Car & Truck Rental 2215 Ave C N.....	664-1692
Discount Car & truck Rentals 335 Grand Rd.....	242-6556
Enterprise Rent-A-Car 1206 Emerson Ave.....	244-6900
Hertz Rent A Car 6-2345 Ave C.....	373-1161
National Car & Truck Rental 111-2301 Ave C N.....	664-8771
Thrifty Car Rental 143 Robin Cr.....	244-8000

Saskatoon Amenities



Off Campus Restaurants/Food Options:

Chili's 1730 Preston Ave.....	653-4547
Burger King 1747 Preston Ave.....	933-2689
Wal-Mart Preston Crossing.....	373-2300
Sobeys 1739 Preston Ave.....	668-9901
Doc Hollandaise 6-705 Central Ave.....	651-5115
Wing World 706B Central Ave.....	652-9464
Vern's Pizza 706 Central Ave.....	665-8376
Dairy Queen 1418 College Drive.....	664-3377
Alexander's Rest. and Pub 414 Cumberland Ave N.....	956-7777
Red Lobster 2501 8 th St. E.....	373-8333
McDonalds 1608 8 th St.E.....	955-8669
McDonalds Circle and 8 th St.E.....	955-8674
The Keg 1110 Grosvenor Ave.....	653-3633
Jerry's Food Emporium 1115 Grosvenor Ave.....	373-6555
East Side Mario's 2335 8 th St.E.....	665-5550
New Asia Buffet 1-3311 8 th St.E.....	955-3265
Mr. Sub 2-3401 8 th St. E.....	373-3335
Spicy Bites Indian Food 4-3401 8 th St. E.....	373-4747

For delivery, hours of operation and take out information on local restaurant services; refer to the SaskTel Phonebook yellow pages restaurant section menus, or

[http://directory.saskatoondirect.info/Dining Entertainment/Fast Food Takeout Delivery/](http://directory.saskatoondirect.info/Dining_Entertainment/Fast_Food_Takeout_Delivery/)

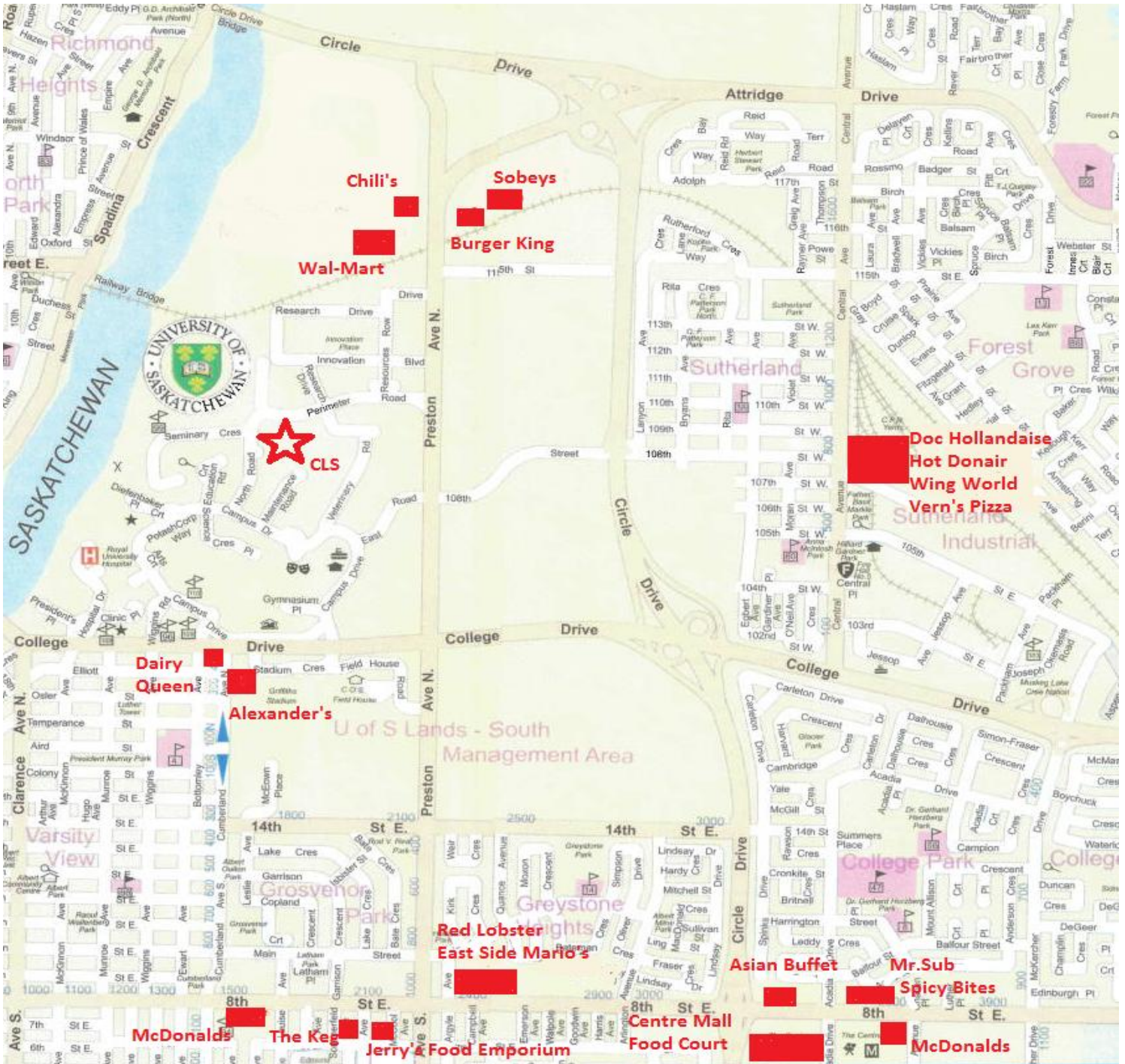
or

http://tourismsaskatoon.com/siteimages/StoonDiningGuide_web.pdf

Saskatoon Amenities



Off Campus Restaurants/Food Options:



Saskatoon Amenities



On Campus Restaurants/Food Options and Services:

A&W Restaurant	1 Campus Dr, Lower Place Riel.....	966-6789
Agriculture Cafeteria	51 Campus Dr.....	966-6789
Bene Pizza	1 Campus Dr, Lower Place Riel.....	966-6789
Boffins Club	311-111 Research Dr.....	249-5344
Extreme Pita	1 Campus Dr, Lower Place Riel.....	966-6789
Faculty Club	101 Administration Pl.....	966-7777
Louie's	93 Campus Dr.....	966-7000
Lutheran Seminary Cafeteria	14 Seminary Cr.....	966-7868
Tim Hortons	Arts Building, Basement; In the Tunnel.....	966-6789
Tim Hortons	Geology Building; Second Floor.....	966-6789
Treats Café	1 Campus Dr, Lower Place Riel.....	966-6789

For hours of operation, refer to

www.usask.ca/consumer_services/foodservices

Saskatoon Amenities



On Campus Restaurants/Food Options and Services:

Bookstore Marquis Hall 97 Campus Dr.....	966-4668
Fit Center.....	966-1000



College of Kinesiology
PAC 222
87 Campus Drive
Saskatoon, Saskatchewan
S7N 5B2

Cost:

Drop in pass:
\$8.00/day plus GST

Fit Centre Hours:

Monday to Friday 6:30 am - 10:30 pm

Saturday and Sunday 8 am - 9 pm

Contact information:

Fit Centre Desk - 966-1054
Customer Service Desk - 966-1052 or 966-1053



On Campus Restaurants/Food Options And Services:

UNIVERSITY OF SASKATCHEWAN
Campus Map February 2007



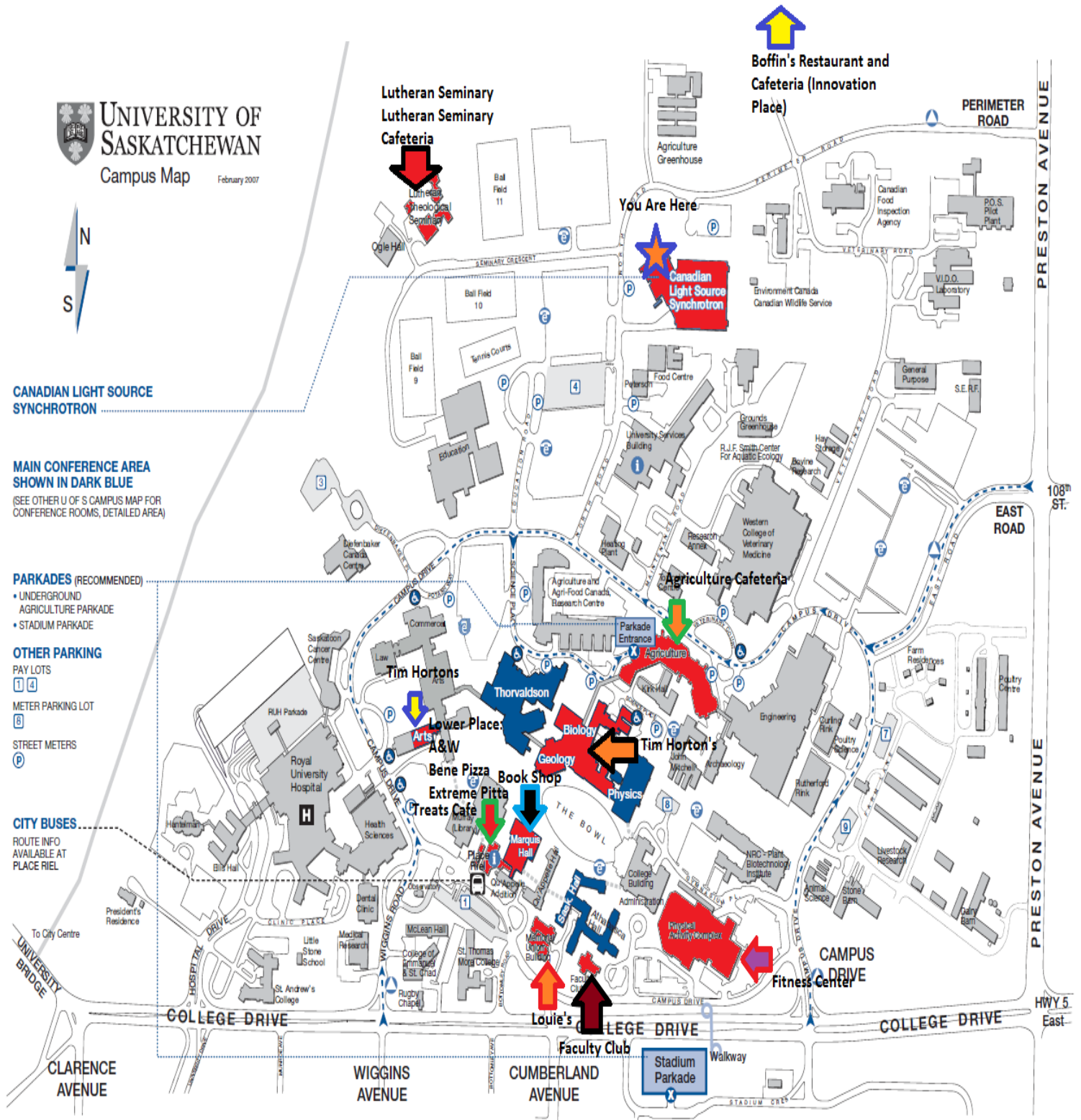
CANADIAN LIGHT SOURCE SYNCHROTRON

MAIN CONFERENCE AREA SHOWN IN DARK BLUE
(SEE OTHER U OF S CAMPUS MAP FOR CONFERENCE ROOMS, DETAILED AREA)

PARKADES (RECOMMENDED)
• UNDERGROUND AGRICULTURE PARKADE
• STADIUM PARKADE

OTHER PARKING
PAY LOTS [1] [2]
METER PARKING LOT [3]
STREET METERS [4]

CITY BUSES
ROUTE INFO AVAILABLE AT PLACE RIEL



Saskatoon Amenities

Bus Services:



<http://www.saskatoon.ca/DEPARTMENTS/Utility%20Services/Saskatoon%20Transit/Pages/default.aspx>

City of Saskatoon Transit. 975-3100

Fares & Tickets

The following fares are effective **January 1, 2010**.

Cash

When paying fare by cash, please have the exact fare ready. Operators do not carry change.

As of February 1, 2010, paper cash is no longer accepted.

Adult	\$2.75
Senior	\$2.75
Post Secondary	\$2.75

Tickets

Adult	10 for \$21.00
Senior	10 for \$21.00
Post Secondary	10 for \$21.00

Saskatoon Amenities

Bus Services:

Routes to and from CLS, Stop # 3990 and 3991, located on Perimeter Road in front of CLS main entrance.

Stop #3990 and 3991 - Route 04 (Willowgrove/Dundonald) and Route 13 (Lawson/Exhibition)

Phone & Go

Phone & Go is a trip planning service available 24 hours a day, seven days a week. By following the phone prompts, you can plan your transit trip right now or weeks in advance.

To quickly find the next buses servicing a stop, call Phone & Go at 975-7500 then:

- press "1" for Schedule Information,
- press "1" for Next Few Buses, then
- enter the **four digit stop number** printed on the bus stop sign

Routes, Service and Transfer Information

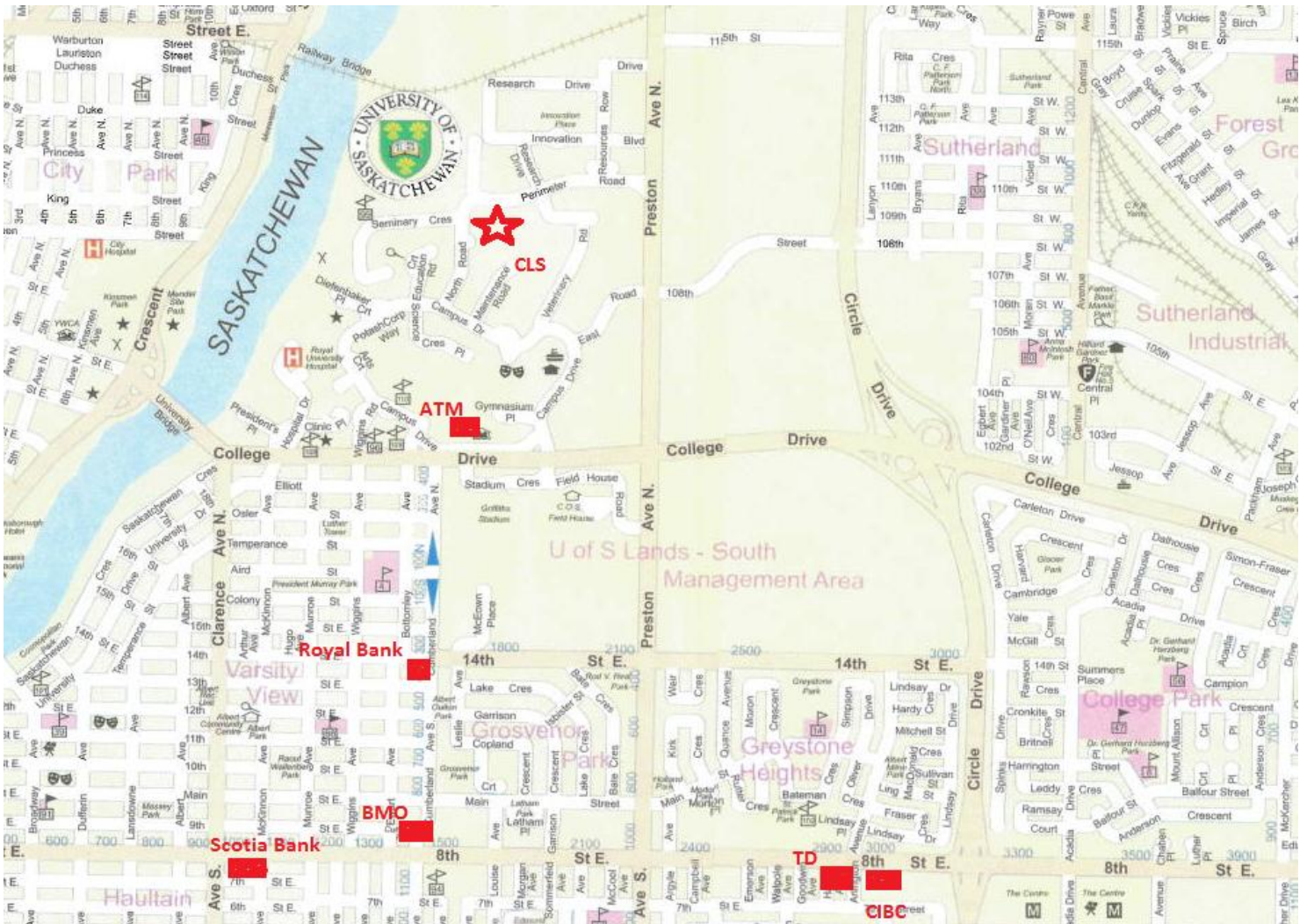
<http://www.saskatoon.ca/DEPARTMENTS/Utility%20Services/Saskatoon%20Transit/Pages/Routes.aspx>

Saskatoon Amenities



Banking Facilities:

- A.T.M Place Riel, 1 Campus Dr..... 966-6960
- Bank of Montreal 1501 8th St E.....934-5725
- CIBC 3124 8th St E.....688-3230
- Royal Bank 1402 College Dr933-3535
- Scotia bank 1004 8th St E..... 668-1480
- TD Canada Trust 3020 8th St E..... 975-7260



Saskatoon Amenities

Saskatoon Maps:

www.tourismsaskatoon.com/maps

www.googlemaps.ca